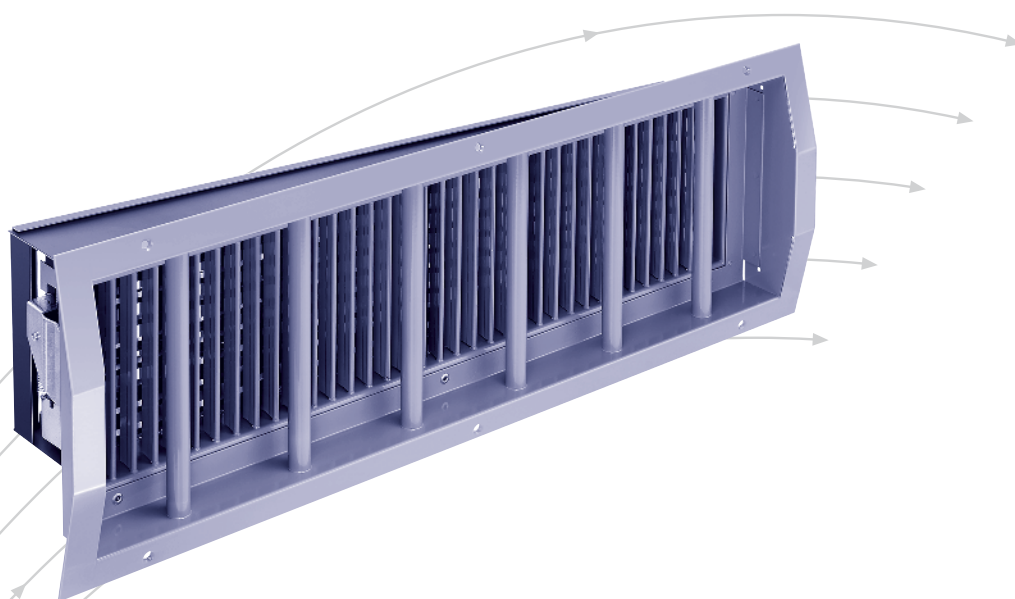


Ball protection grilles

- Type BSDG(L)VAR, BSDG(L)SELF,
- Type BSDGR(A)VAR, BSDGR(A)SELF und
- Type BSDGR(L)AVAR, BSDGR(L)ASELF



TROX® **TECHNIK**



TROX HESCO Schweiz AG
Walderstrasse 125
Postfach 455
CH - 8630 Rüti /ZH

Tel. +41 (0)55 250 71 11
Fax +41 (0)55 250 73 10
www.troxhesco.ch
info@troxhesco.ch

Contents · Application · Realisation · Dimensions

Contents

Application · Realisation · Dimensions	2
Realisation · Dimensions	3
Order details	4

Application

The ball protection grilles are used as supply or extract air grilles in gymnastics, sports and multipurpose halls. They are protected against ball impacts, i.e. all models have been tested by the official Research and Material Testing Institute for Civil Engineering (Otto Graf-Institut) in Stuttgart, Germany. Tests passed for footballs, handballs and medicine balls.

Masonry frame MRDG STARK made of galvanised sheet steel.
For additional information, see MRDG brochure L-02-1-10e.

Continous grilles are not available.

Realisation

Ball protection grilles **type BSDGVAR** are diffusion grilles with a non-protruding ball-protection frame made of powder-coated steel according to RAL 9010 with a **motor-powered** temperature-dependent jet deflection.

Ball protection grilles **type BSDGLVAR** are diffusion grilles with a non-protruding ball-protection frame made of colourless anodised aluminium with a **motor-powered** temperature-dependent jet deflection.

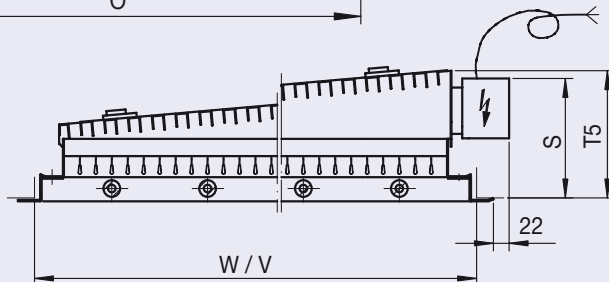
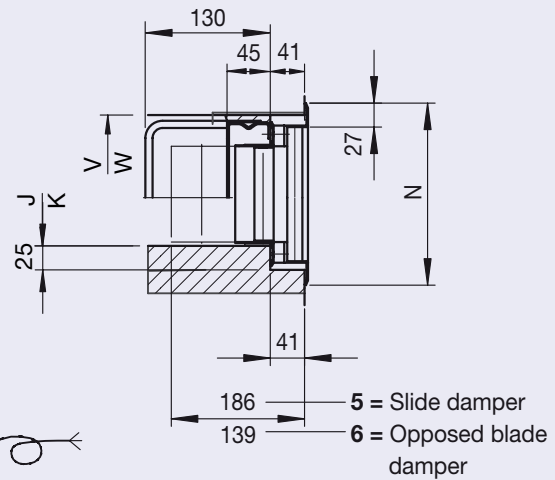
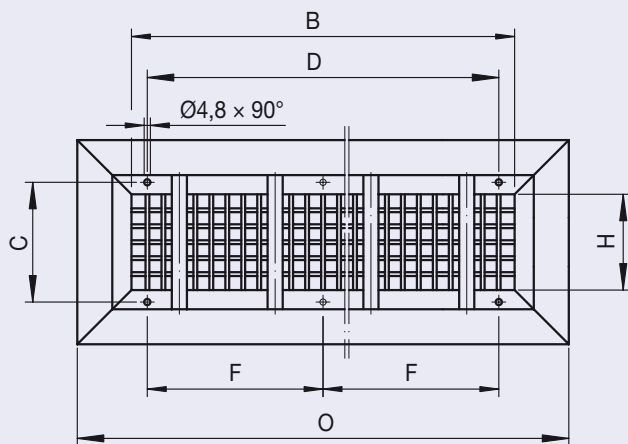
For additional information, see DGVAR brochure L-02-3-01e.

Ball protection grilles **type BSDGSELF** are diffusion grilles with a non-protruding ball-protection frame made of powder-coated steel according to RAL 9010 with a **thermal expansion** powered jet deflection.

Ball protection grilles **type BSDGLSELF** are diffusion grilles with a non-protruding ball-protection frame made of colourless anodised aluminium with a **thermal expansion** powered jet deflection.

For additional information, see DGSELF brochure L-02-3-10e.

Dimensions type BSDG(L)VAR and BSDG(L)SELF



B	D	F	O	K	W	T5
[mm]	[mm]	[mm]	B + 97 [mm]	B + 15 [mm]	B + 60 [mm]	[mm]
600	567	283.5	697	615	660	151
750	600	300	847	765	810	171
900	283.5 +300.0 +283.5	-	997	915	960	191

H	C	N	J	V	S
[mm]	[mm]	H + 97 [mm]	H + 10 [mm]	H + 60 [mm]	[mm]
200	225	297	210	260	149
250	275	347	260	310	164

Realisation · Dimensions

Realisation

Ball protection grilles **type BSDGR(A)VAR** are diffusion grilles with a non-protruding ball-protection frame for duct installation made of grey powder-coated steel according to RAL 7037 with a **motor-powered** temperature-dependent jet deflection.

Ball protection grilles **type BSDGRL(A)VAR** are diffusion grilles made of colourless anodised aluminium with a non-protruding ball-protection frame for duct installation made of grey powder-coated steel according to RAL 7037 with a **motor-powered** temperature-dependent jet deflection.

For additional information, see **DGVAR** brochure L-02-3-01e.

Ball protection grilles **type BSDGR(A)SELF** are diffusion grilles with a non-protruding ball-protection frame for duct installation made of grey powder-coated steel according to RAL 7037 with a **thermal expansion** powered jet deflection.

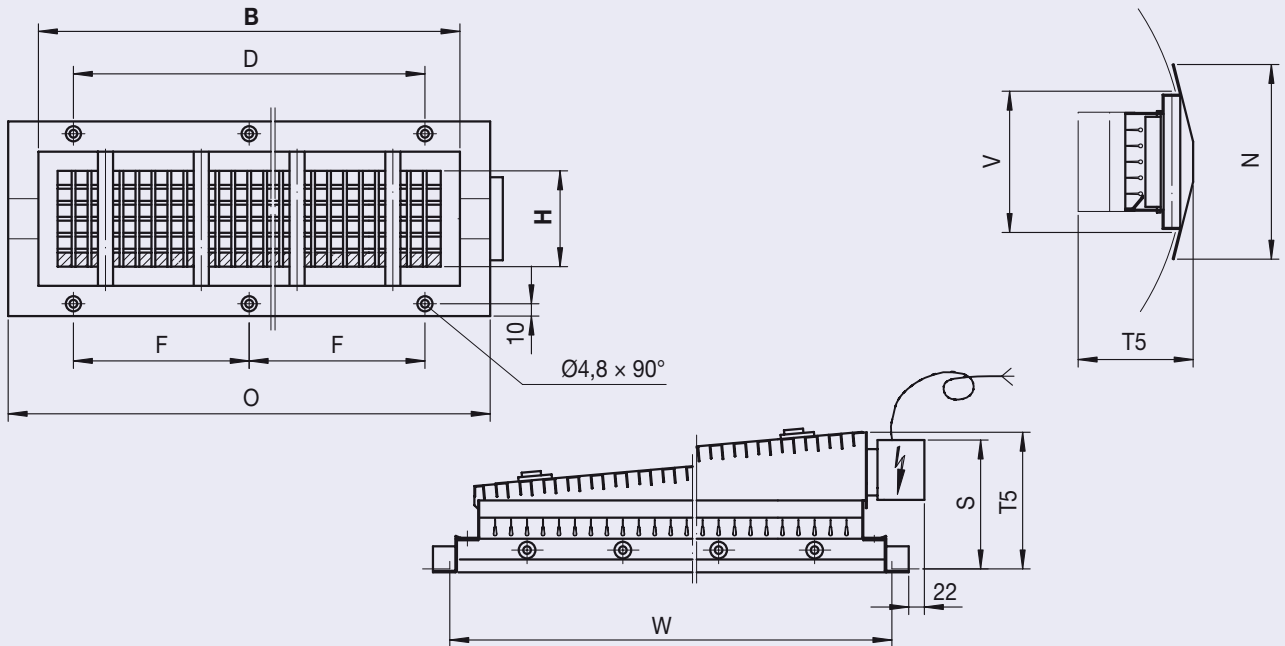
Ball protection grilles **type BSDGRL(A)SELF** are diffusion grilles made of colourless anodised aluminium with a non-protruding ball-protection frame for duct installation made of grey powder-coated steel according to RAL 7037 with a **thermal expansion** powered jet deflection.

For additional information, see **DGSELF** brochure L-02-3-10e.

Note

Grille must be attached to the duct with screws.

Dimensions type BSDGR(A)VAR, BSDGR(A)SELF, BSDGR(L)AVAR and BSDGR(L)ASELF



B Nominal width [mm]	D [mm]	F [mm]	O B + 100 [mm]	W B + 80 [mm]
600	567	283.5	700	680
750	717	358.5	850	830

H Nominal height [mm]	N H + 100 [mm]	V H + 60 [mm]	S [mm]	T5	
				B = 600 [mm]	B = 750 [mm]
100	200	160	245	158	178
150	250	210	251	160	180
200	300	260	149	165	185
250	350	310	154	170	190

Order details

Order codes

No details for standard products

	BSDG	VAR	5	LI	BL-LB	/	... x ...	/	0	/	44	/	P1	/	RAL 9006
<p>Type</p> <p>BSDG = Diffusion grille with ball protection (steel)</p> <p>BSDGR = Diffusion grille with ball protection (steel, for duct installation)</p> <p>BSDGRA = Diffusion grille with ball protection (steel, for small-diameter duct installation)</p> <p>BSDGL = Diffusion grille with ball protection (aluminium)</p> <p>BSDGRL = Diffusion grille with ball protection (aluminium for duct installation)</p> <p>BSDGRLA = Diffusion grille with ball protection (aluminium, for small-diameter duct installation)</p> <p>SELF = Horizontal air control blades adjusted automatically via temperature indicator</p> <p>VAR = Rear horizontal blades adjustable via electric motor</p> <p>1 = Supply air without damper</p> <p>5 = Supply air with slide damper</p> <p>5P = Supply air with parallel slide damper</p> <p>6 = Supply air with opposed blade damper</p> <p>L34 = Left, 34° temperature indicator (working range 10° to 34°) (BSDGSELF only)</p> <p>L50 = Left, 50° temperature indicator (working range 10° to 50°) (BSDGSELF only)</p> <p>R34 = Right, 34° temperature indicator (working range 10° to 34°) (BSDGSELF only)</p> <p>R50 = Right, 50° temperature indicator (working range 10° to 50°) (BSDGSELF only)</p> <p>LI = Motor mounted left (BSDGVAR only)</p> <p>RE = Motor mounted right (BSDGVAR only)</p> <p>0 = With fixing holes in inner frame (standard)</p> <p>BL = With fixing holes in outer frame</p> <p>0 = None (standard)</p> <p>-LB = Perforated metal sheet, 35% (other fixed resistances possible)</p>	<p>B x H Nominal width x nominal height</p>	<p>0 = Standard BSDG: powder-coated according to RAL 9010, silky sheen, 60% brilliance</p> <p>Standard BSDGR(A): powder-coated according to RAL 7037, silky sheen, 60% brilliance</p> <p>Standard BSDGL: Anodised according to E0-VSA200 (colourless)</p> <p>P1 = Powder-coated according to RAL... (additional RAL colours and brilliance levels available on request)</p> <p>S1 = Spray-painted according to RAL... (additional RAL colours and brilliance levels available on request) (BSDGL only)</p> <p>S2 = Anodised according to E0-... (EURAS or VSA standard possible), BSDGL only.</p> <p>0 = No divergence (standard)</p> <p>44 = 44° divergence</p> <p>84 = 84° divergence</p> <p>110 = 110° divergence</p> <p>140 = 140° divergence</p> <p>geg = Opposed</p> <p>0 = Cable through frame (standard)</p> <p>1 = Cable not through frame</p> <p>2 = Motor placed inside</p>	<p>RAL 9006 silky sheen, 60% brilliance</p>												

Order examples

10 off BSDG3BL / 600x150 / 44 / P1

For additional information, see DGVAR- and DGSELF brochure

Options

- Other RAL colours