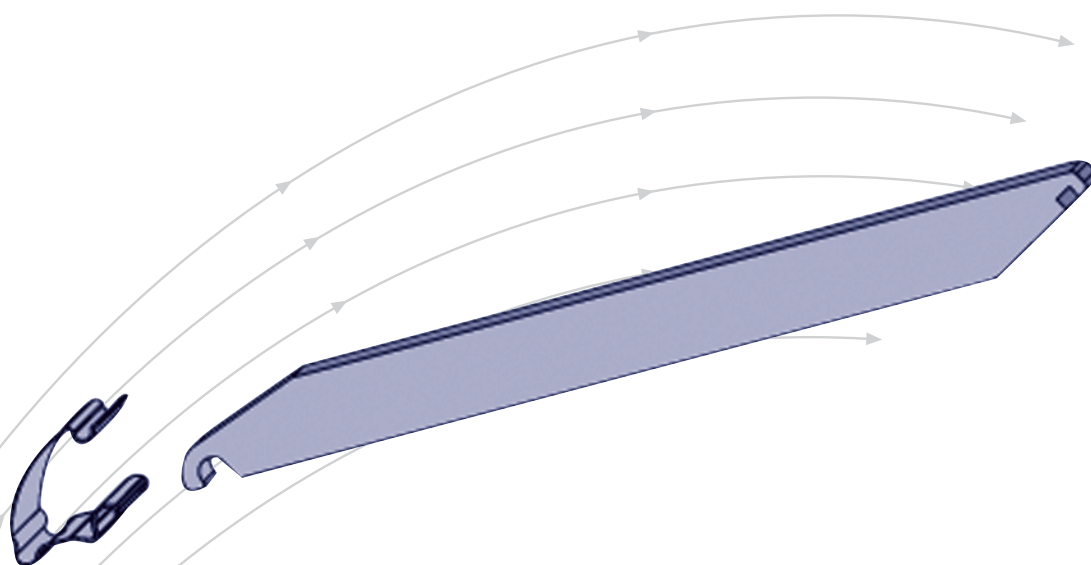


Mounting description

Screwless mounting (SL)



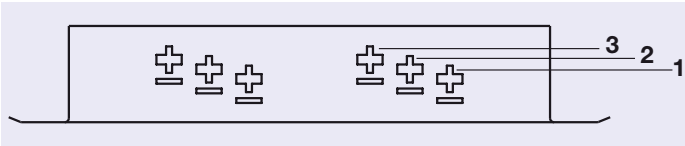
TROX[®] TECHNIK



TROX HESCO Schweiz AG
Walderstrasse 125
Postfach 455
CH - 8630 Rüti /ZH

Tel. +41 (0)55 250 71 11
Fax +41 (0)55 250 73 10
www.troxhesco.ch
info@troxhesco.ch

The grilles are secured with springs hinged on slots in the diffusion grille frame. The grille frames have three slot pairs designed for the clamping thickness 0-4 mm, 4-8 mm, and 8-12 mm.



- 1 Clamping thickness 0 - 4 mm
- 2 Clamping thickness 4 - 8 mm
- 3 Clamping thickness 8 - 12 mm

Fig. 1

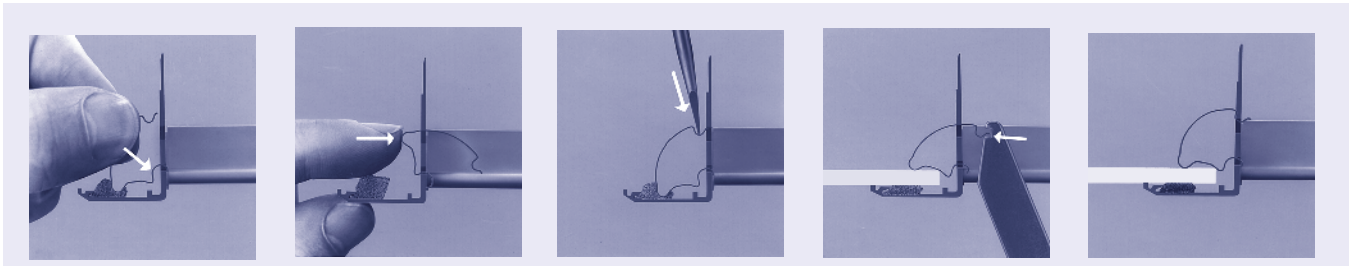


Fig. 2

Fig. 3

Fig. 4

Fig. 5

Fig. 6

Mounting of the grille

- Fig. 1 Determine clamping thickness of grille opening.
- Fig. 2 Hinge fixing spring from outside in corresponding slot pair.
- Fig. 3 Push back.
- Fig. 4 Use screwdriver for clamping thickness 0-4 mm.

- Fig. 5 Insert grille in duct opening and position in such a way, that **the clearance between grille frame and opening is equally distributed**. Push the fixing springs from front into the frame until they engage. Use a screwdriver or the mounting tool.
- Fig. 6 The mounting is finished.

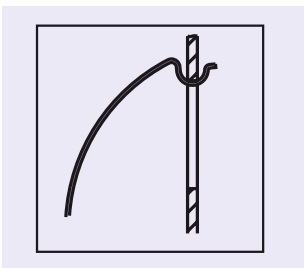


Fig. 7a correct: fixing springs **must** engage

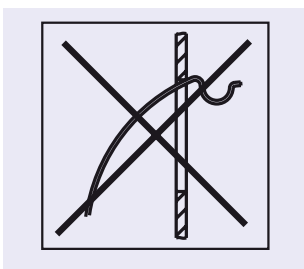


Fig. 7b incorrect

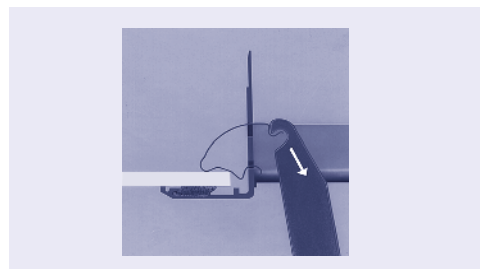


Fig. 8

Grille disassembly

- Fig. 8 Unhinge fixing springs with hook of mounting tool and withdraw. Remove grille.