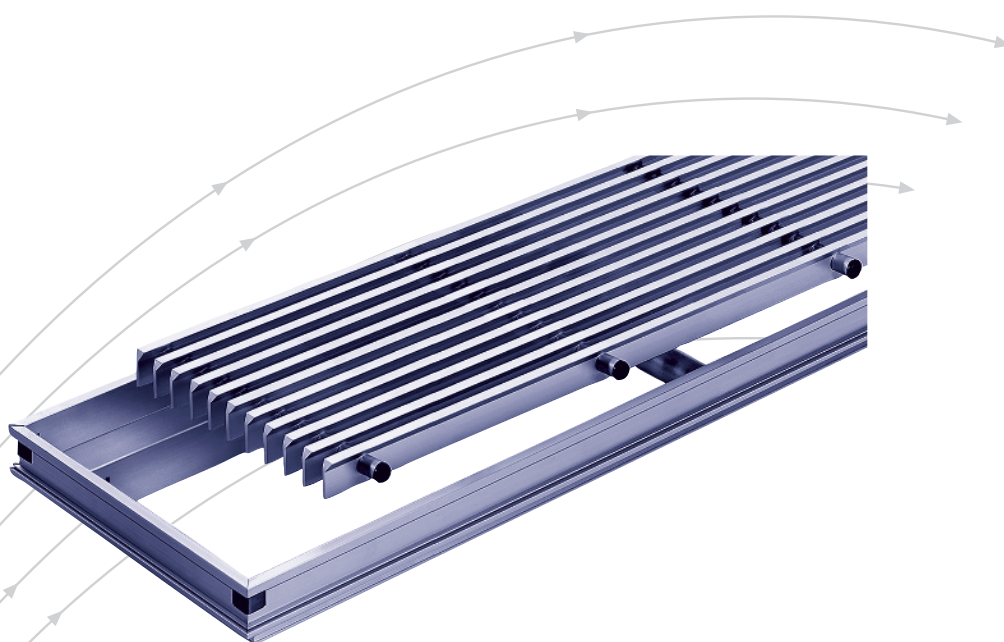


Floor grille

Type BG



TROX® **TECHNIK**



TROX HESCO Schweiz AG
Walderstrasse 125
Postfach 455
CH - 8630 Rüti /ZH

Tel. +41 (0)55 250 71 11
Fax +41 (0)55 250 73 10
www.troxhesco.ch
info@troxhesco.ch

Contents

Application · Realisation · Rapid selection	2
Dimensions	3-5
Installation	6
Order Details	7

Floor grilles of light metal are very attractive air terminals. They are designed for **load bearing** applications.

Application

BG are used as air supply or exhaust grilles in floors or ledges. BG with masonry frames are particularly convenient as covers of floor heating convectors. The removable lamina grating facilitates cleaning.

Realisation

The light metal floor grilles with colourless anodised finish consist of an outer frame with an inserted lamina grating fixed with rubber buffers in grey. The dampers consist of steel frames with light metal opposed blades.

Rapid selection

Preferential sizes type **BGF...**, not in stock

Nom. width B [mm]	Nominal height		
	ZL [m ³ /h]	H [mm]	AL [m ³ /h]
400	98	57	147
500	122	57	183
600	147	57	220
750	183	57	274
1000	245	57	367
1250	306	57	459

Base: Directly flowing resp. flowing off

ZL = supply air, $v_{\text{eff}} = 2.0 \text{ m/s}$, $\Delta p_s = 4 \text{ Pa}$
 AL = exhaust air, $v_{\text{eff}} = 3.0 \text{ m/s}$, $\Delta p_s = 7.5 \text{ Pa}$
 BGFS30(MR) 600 × 57 mm
 L_w for nominal dimension 600 × 57 mm:
 $L_{wZL} = 20 \text{ dB(A)}$, $L_{wAL} = 21 \text{ dB(A)}$

Preferential sizes type **BGU...**, not in stock

Nom. width B [mm]	Nominal height								
	ZL [m ³ /h]	H [mm]	AL [m ³ /h]	ZL [m ³ /h]	H [mm]	AL [m ³ /h]	ZL [m ³ /h]	H [mm]	AL [m ³ /h]
450	98	95	147	184	145	276	270	195	405
550	122	95	183	230	145	345	337	195	505
650	147	95	220	276	145	414	405	195	607
800	183	95	274	345	145	517	506	195	759
1050	245	95	367	460	145	690	675	195	1012
1300	306	95	459	575	145	862	843	195	1265

Base: Directly flowing resp. flowing off

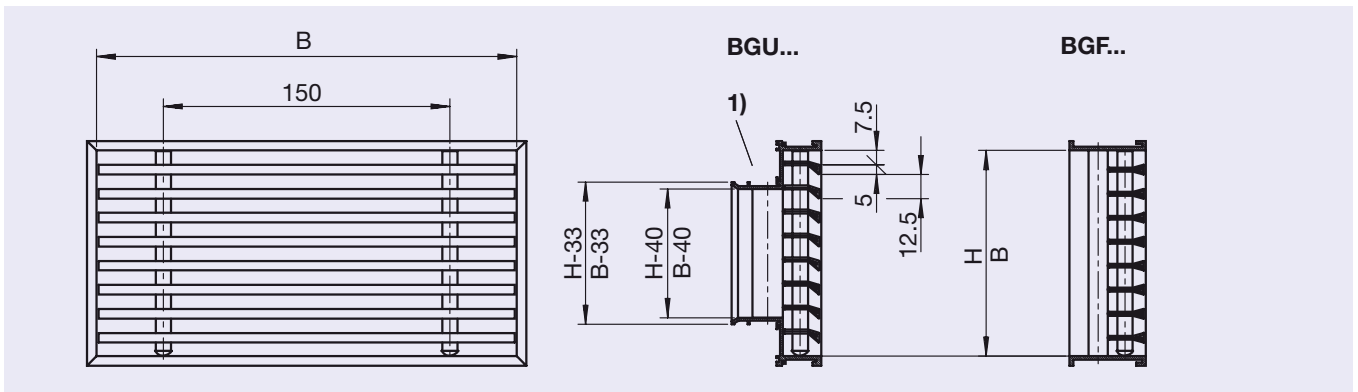
ZL = supply air, $v_{\text{eff}} = 2.0 \text{ m/s}$, $\Delta p_s = 4 \text{ Pa}$
 AL = exhaust air, $v_{\text{eff}} = 3.0 \text{ m/s}$, $\Delta p_s = 7.5 \text{ Pa}$
 BGUG30(MR) 650 × 145 mm
 L_w for nominal dimension 650 × 145 mm:
 $L_{wZL} = 20 \text{ dB(A)}$, $L_{wAL} = 24 \text{ dB(A)}$

Legend

v_{eff} = velocity of effective air
 Δp_s = static pressure drop
 L_w = sound power level

Dimensions

B = nominal length, H = nominal height = inside frame dimensions, Free area = ca. 63 %



1) Cross-ducts B x H > 750 x 195

Preferential sizes BGF..., not in stock
with frame F

Nominal width B [mm]						Nominal height H [mm]
400	500	600	750	1000	1250	57

Preferential sizes BGU..., not in stock
with frame U

Nominal width B [mm]						Nominal height H [mm]
450	550	650	800	1050	1300	95
						145
						195

Special sizes

Floor grilles are manufactured in every desired nominal length B. However, if their length B exceeds 2000 mm, they are supplied as partial segments.

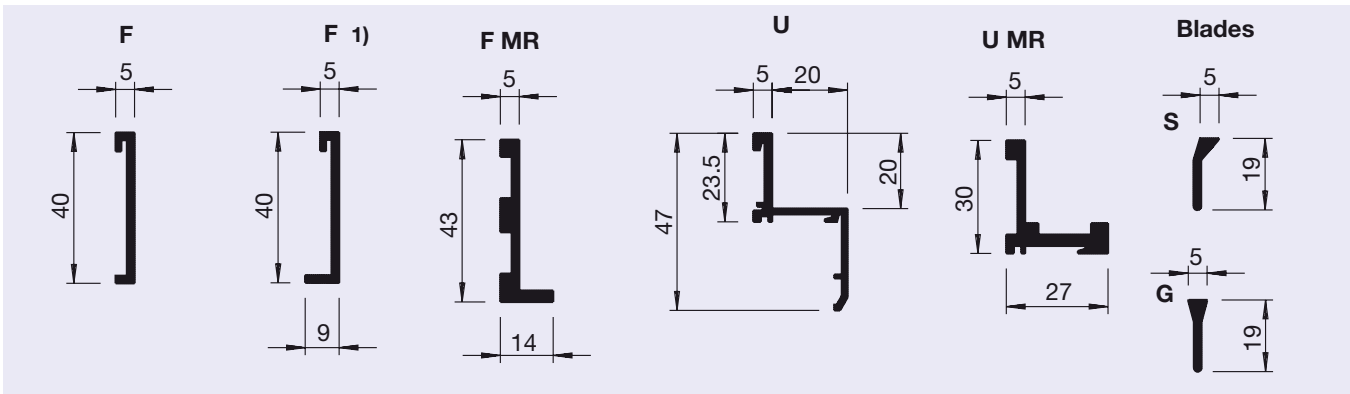
Minimum length = 200 mm.

Due to the lamina distribution, the nominal height H must correspond to one of the following measurements.

H [mm]	BGF....					BGU....										etc
	32	45	57	70	82	95	107	120	132	145	157	170	182	195		
Number of blades	2	3	4	5	6	7	8	9	10	11	12	13	14	15		

Dimensions

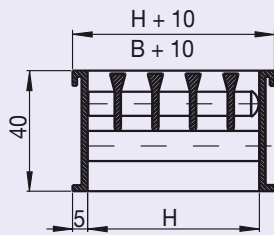
Profile sections



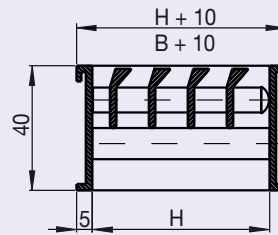
1*) corresponding to profile FMR

Sections

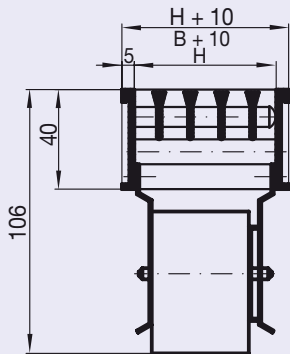
The nominal heights H available are indicated for each grille type.



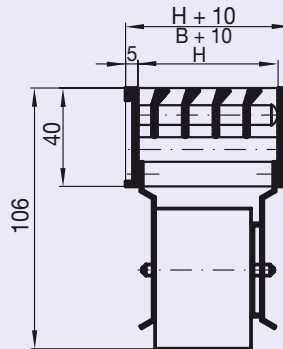
BGFG30
H = 57 mm
(32...82)



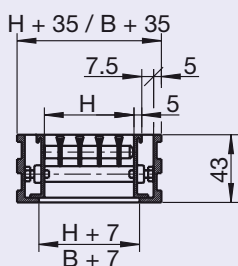
BGFS30
H = 57 mm
(32...82)



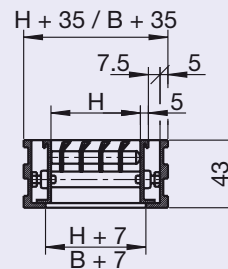
BGFG36
H = 57 mm
(32...82)



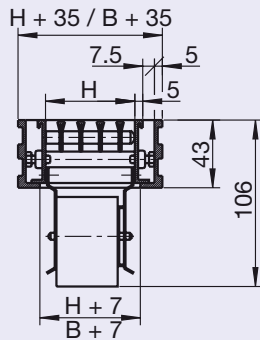
BGFS36
H = 57 mm
(32...82)



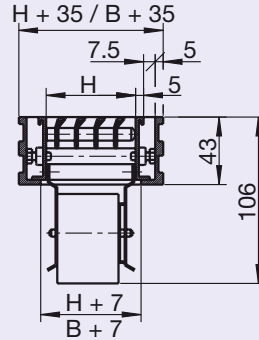
BGFG30MR
H = 57 mm
(32...82)



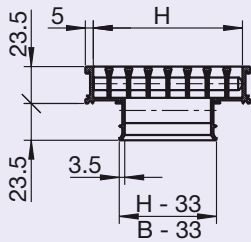
BGFS30MR
H = 57 mm
(32...82)



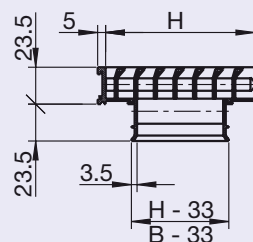
BGFG36MR
H = 57 mm
(32...82)



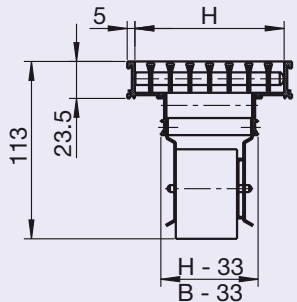
BGFS36MR
H = 57 mm
(32...82)



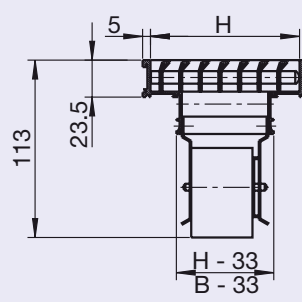
BGUG30
H = 95, 145, 195 mm
(95...495)



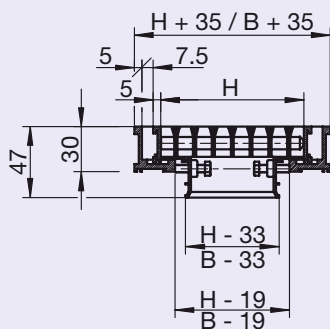
BGUS30
H = 95, 145, 195 mm
(95...495)



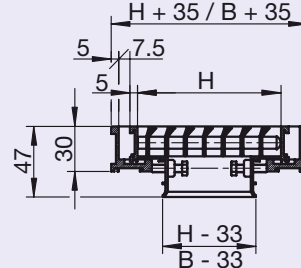
BGUG36
H = 95, 145, 195 mm
(95...445)



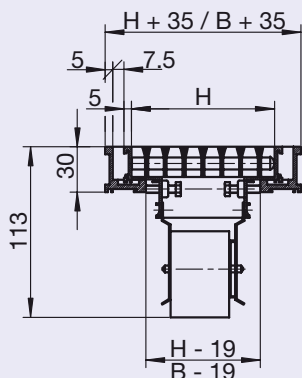
BGUS36
H = 95, 145, 195 mm
(95...445)



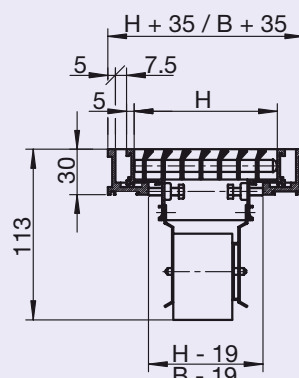
BGUG30MR
H = 95, 145, 195 mm
(95...495)



BGUS30MR
H = 95, 145, 195 mm
(95...495)



BGUG36MR
H = 95, 145, 195 mm
(95...495)

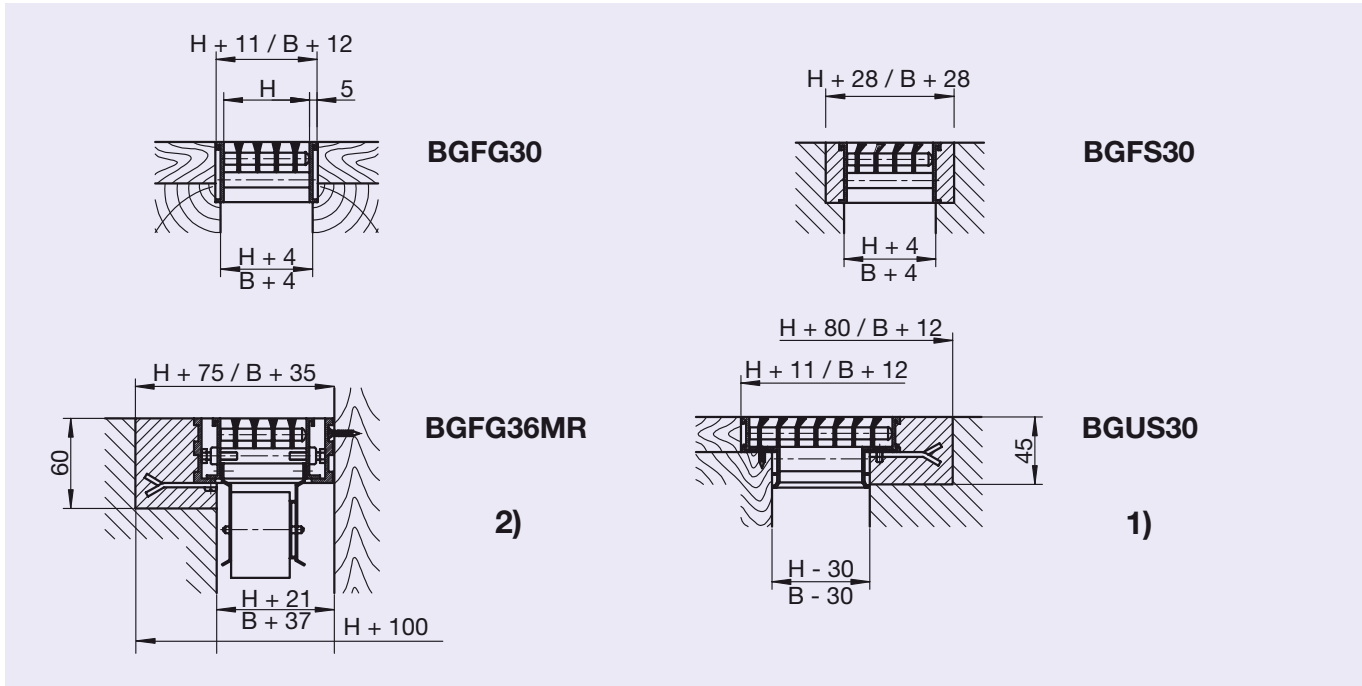


BGUS36MR
H = 95, 145, 195 mm
(95...495)

Installation

Installation examples

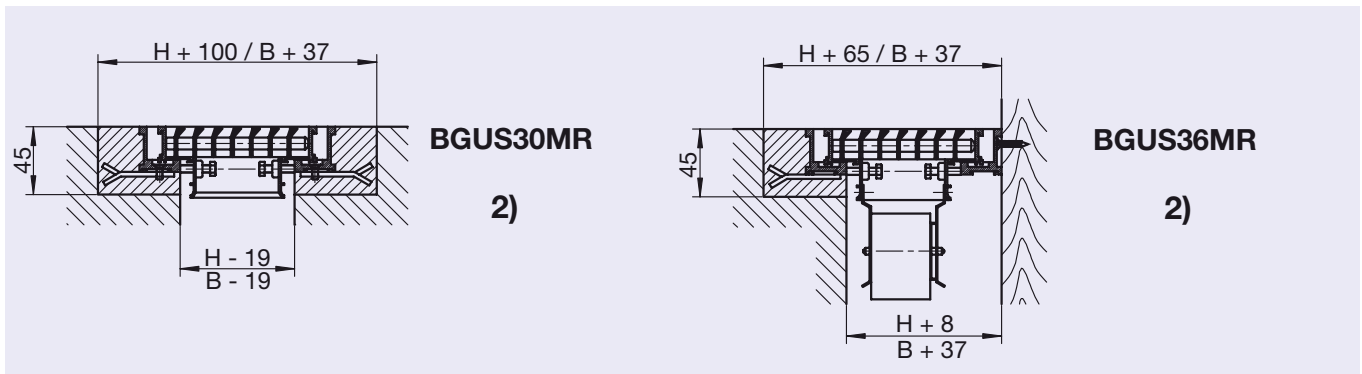
Outer measurements BG with $MR = B + 35 \text{ mm}$, $H + 35 \text{ mm}$



- Wall connection (indicate in order)

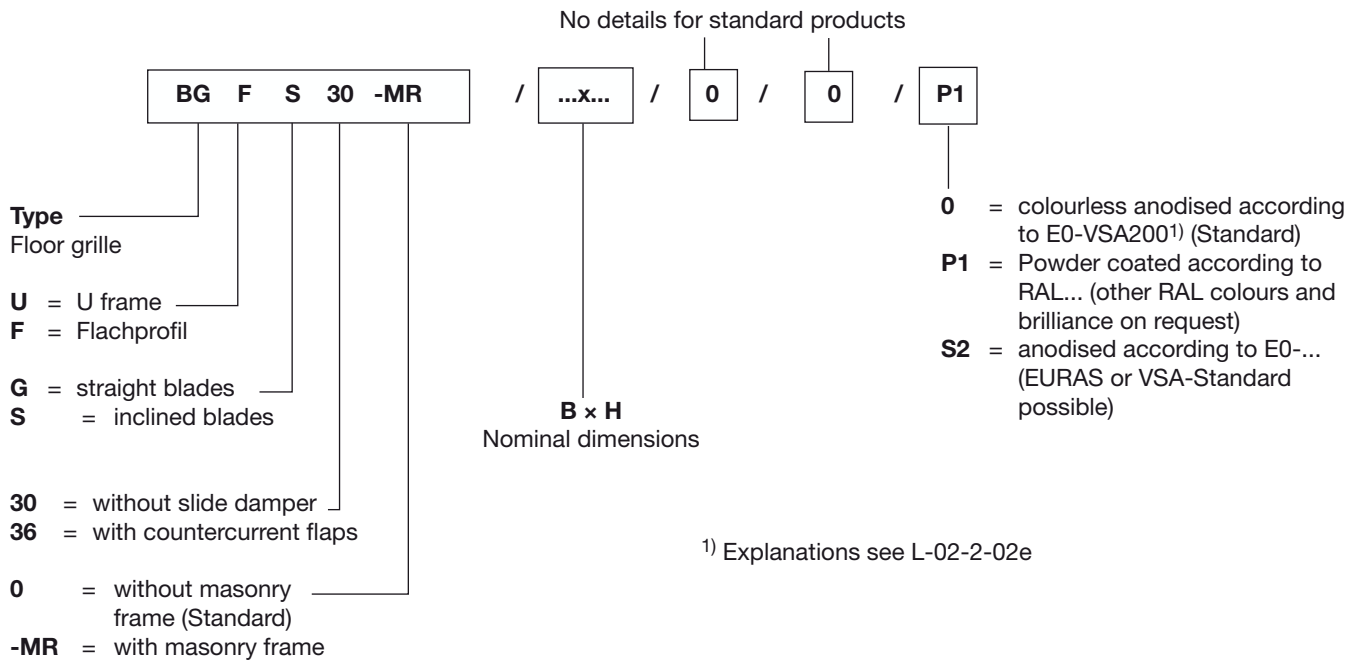
1) For mounting of BGUS/G30 (variation walled) the wall fastening parts **have to be mentioned separately** by order.

2) For mounting with masonry frame the wall fastening parts are included only by length more than 600 mm.



- Wall connection (indicate in order)
- We suggest the use of a masonry frame in the case of floor heating convectors and of BG with damper.

Order codes



Order examples

10 off BG F S 30 -MR / 950x95
20 off BG U G 36 / 1050x195 / P1 / RAL9010

Text for tendering purposes

Types

BGFG30, BGFS30, BGUG30, BGUS30

Floor grille of solid light metal sections for **load bearing** applications, colourless anodized. Existing of an outer frame with a removable blades grating. Blades arranged in longitudinal direction, not adjustable. The lamina grating is fixed with rubber buffers.

Types

BGFG36, BGFS36, BGUG36, BGUS36

Floor grille like BGF..30 and BGU..30, however with damper mounted on rear side and light metal opposed blades (colourless).

Types

BGFG30MR, BGFS30MR, BGUG30MR, BGUS30MR

Floor grille with masonry frame (without wall fastening parts) of solid light metal sections for **load bearing** applications, colourless anodized. Existing of a masonry frame as well as a frame grating and a lamina grating which are removable, not adjustable. The frame grating and the lamina grating are fixed with rubber buffers or screws.

Types

BGFG36MR, BGFS36MR, BGUG36MR, BGUS36MR

Floor grilles with masonry frame like BGF..30MR and BGU..30MR, however with damper mounted on rear side and light metal opposed blades (colourless).

